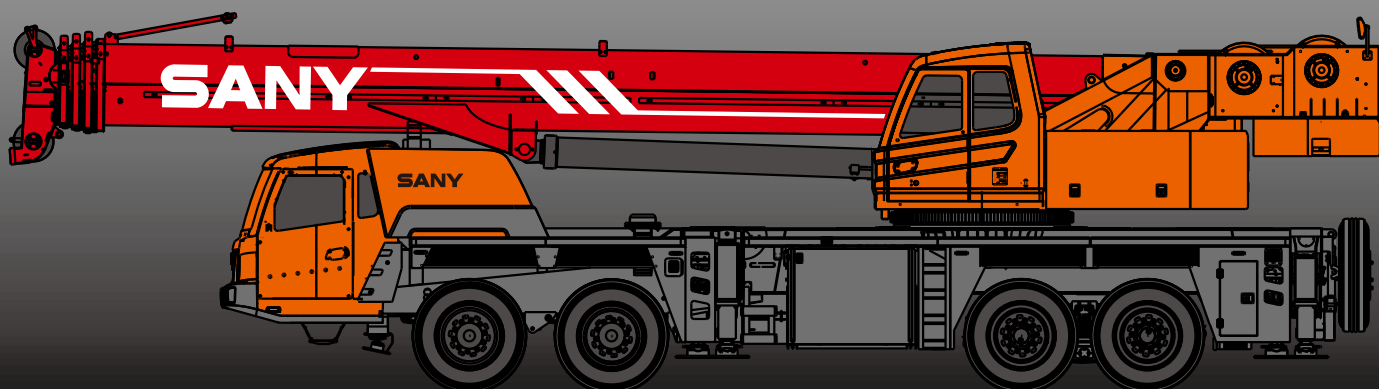


# STC800S

STC800S TRUCK CRANE  
80 TONS LIFTING CAPACITY

Quality Changes the World



# SANY

■ SANY Automobile Hoisting Machinery is one of the core business unit of Sany Heavy Industry, mainly engaged in the research and development of high end, mid to large tonnage crane series, including mobile crane, crawler crane, tower crane and loader crane. It has two industrial parks in Ningxiang and Huzhou, since entering the market, the products of Sany Automobile Hoisting Machinery have received worldwide recognition with advanced technology, lean manufacturing, high reliability and excellent service.







# SANY TRUCK CRANE

## CONTENT

04	Icon
05	Selling Points
06	Introduction
09	Dimension
10	Technical Parameter
11	Operation Condition
12	Load Chart
18	Wheel Crane Family Map



Cab



Carrier frame



Suspension system



Hydraulic system



Outriggers



Telescopic boom



Control system



Engine



Lattice jibs



Telescopic system



Transmission system



Superlift devices



Luffing system



Drive/Steer



Luffing lattice jib



Slewing



Axles



winch mechanism:



Counterweight



Tyres



Safety system



Brakes system



Hoist system



Electrical system

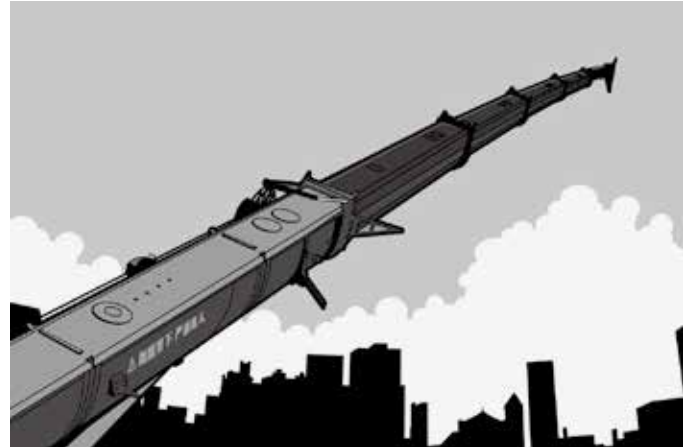


### Excellent and stable chassis performance / chassis system

Double-axle drive is used, providing good trafficability and comfortableness under complex road condition with reliable traveling performance.

Engine has the multimode power output function, which reduces power consumption.

The use of tipping over early-warning technology provides high stability and safety of the overall operation.



### Ultra long, super strong and highly sensitive load lifting capacity

Five-section boom of high strength steel structure and optimized U-shaped cross reduces weight significantly with higher safety rates. Jib mounting angles are 0°, 15° and 30° which ensures fast and convenient change-over between different operating conditions so as to improving working efficiency of the machine.



### Highly efficient, stable, energy-saving and adjustable hydraulic system

Electrical proportion Hydraulic system load feedback, piston pump, electrical controlled valve and constant power control are applied to provide strong lifting capacity and good micro-mobility. Unique steering buffer design is adopted to ensure stable braking operation.



### Safe, stable, advanced and intelligent electric control system

Self-developed controller SYMC specially for engineering machinery is configured. The adoption of CAN-bus full-digital network control technology ensures stable control signal, simple harness and high reliability. Timely feedback of data information can achieve the monitoring of the overall working status in real-time. The load moment limiter equipped with the comprehensive intelligent protection system is used with accuracy within 3% to provide a comprehensive logic and interlock control, thus ensuring more safe and reliable operation.

## Superstructure

**Cab**

- It is made of anti-corrosion steel plate with ergonomic design such as full-coverage soften interior, panoramic sunroof and adjustable seats etc., and humanized design providing more comfortable and relaxing operation experience. The display of load moment limiter integrates main console and operation display system, which clearly show the data of all operating superstructure conditions for lifting operation.

**Hydraulic system**

- High-quality key hydraulic components such as main oil pump, rotary pump, main valve, winch motor, and balancing parts etc. are adopted to achieve stable and reliable operation of the hydraulic system. Superior operation performance is guaranteed by accurate parameter matching.
- Through the adoption of load sensitive variable displacement piston pump, pump displacement can be adjusted in real-time, achieving high-precision flow control with no energy loss during operation.
- Electrical controlled valve has flow compensation, load feedback control function, enabling stable and convenient control of single action and combined action under different operation conditions .
- Winch adopts the electronically controlled variable motor to ensure high operation efficiency. Max. single line speeds of main and auxiliary winches is up to 130m/min.
- Slewing system is equipped with the integrated slewing buffer valve with free slipping function to ensure more stable starting and control of the slewing operation and excellent micro-mobility.
- Hydraulic oil tank capacity: 880L.

**Control system**

- CAN-bus instrument: CAN-bus instrument with a combined intelligent control electrical system is used for easy reading of the traveling parameters at any time. The engine fault warning function is applied to ensure convenient and fast troubleshooting;
- With fully security protection system, main and auxiliary winches are equipped with over-roll out limiter and height limiters to prevent over-rolling out and over-hoisting of steel rope, including tip-over and limit angle protection.
- Load moment limiter: The adoption of high intelligent load moment limiter system can comprehensively protect lifting operation, ensuring accurate, stable and comfort operation.
- The large colorful touch display is equipped to the superstructure. It displays the information of boom length, angel, working radius, number of the line, counterweight combination, engine rotation speed and hook options, etc. which is easy to check and understand. I/O interface is added to the display of superstructure which could show the condition of the crane very soon.
- The fault diagnosis system can detect superstructure electricity, hydraulic action, chassis (for major safety failure), engine and gearbox for fault to ensure reliable operation of the crane.

**Luffing system**

- Dead-weight luffing provides more stable luffing operation at low energy loss
- Luffing angle: -2°~ 80°.

**Telescopic system**

- Five-section boom is applied with basic boom length of 12.2m, full-extended boom length of 47m, jib length of 17.5m and lifting height of fully extended boom length of 47.3m respectively. Max. lifting height is 64.7m including jib. It is made of fine grain high-strength steel with U-shaped cross section and with telescopic operation controlled independently by dual-cylinder rope.

**Slewing system**

- 360° rotation can be achieved with Max. slewing speed of 2.0r/min. Electrical controlled proportional speed adjustment is applied to provide stable and reliable operation of the system. Unique rotary buffer design ensures more stable braking.

## Superstructure



### Hoisting system

- With high efficiency of winch, larger gear ratio and stable operation.
- Closed winch brake and winch balance valve effectively prevent imbalance of the hook.
- With load sensitive function, the main valve winch is highly effective and energy-saving.
- Two main hooks: 800/700kg and 320kg, the Max. lifting weight are 80t and 30t, one auxiliary hook: 140kg, Max lifting weight is 5t. Wire rope of main winch: left-handed wire rope: 20-35W×7-1960L245m. Wire rope of auxiliary winch: left-handed wire rope: 20-35W×7-1960 L145m.



### Safety system

- Load moment limiter: Load moment limiter calculation system based on lifting load mechanical model is established using an analytical mechanics method with rated lifting accuracy up to  $\pm 3\%$  through on-line non-load calibration, providing full protection to lifting operation. In case of overload operation, system will automatically issue an alarm to provide safety protection for manipulation.
- Hydraulic system is configured with the balance valve, overflow valve, and two-way hydraulic lock etc. components, thus achieving stable and reliable operation of the hydraulic system.
- Main and auxiliary winches are equipped with over roll-out limiter to prevent over rolling-out of wire rope.
- Boom and jib ends are equipped with height limiters respectively to prevent over-hoisting of wire rope.
- Boom head is equipped with anemometer and press sensor to indicate the working condition of whole crane in real-time, giving an alarm and cutting off the dangerous action automatically.



### Counterweight

- One 4000kg fixed counterweight and one 4500kg flexible counterweight are standard configuration and one 4500kg flexible counterweight is optional.

## Chassis



### Cab

- Cab is made of new steel structure self-developed by SANY, featuring excellent shock absorption and tightness, which is configured with swing-out doors at both sides, pneumatically suspended driver's seat and passenger seat, adjustable steering wheel, large rearview mirror, comfort driver chair having a headrest, anti-fog fan, air conditioner, stereo radio, complete control instruments and meters and the sleeper providing more comfortable, safe, and humanized operation experience.



### Carrier frame

- Designed and manufactured by SANY, anti-torsion box structure is welded by fine-grain high-strength steel plate, to provide strong load bearing capacity. Compared to the trench-shaped structure, the box structure 20% higher in rigidity and the bearing capacity is improved a lot as well.



### Axles

- Axles 3 and 4 are drive axles and axles 1 and 2 are steering axles, with axle and wheel differentials and wheel differential; the use of welding process for axle housing provides stronger load bearing capacity.



### Engine

- Type: Inline six-cylinder, water cooled, supercharged and inter-cooling diesel engine
- Rated power: 275kw/2100r/min
- Environment-protection: Emission complies with EuroIII standard
- Capacity of fuel tank: 350L

**Chassis****Transmission system**

- Gearbox: Manual gearbox is adopted with 9-gear and large speed ratio range applied, which meets the requirements of low gradeability speed and high traveling speed.
- Transmission shaft: With optimized arrangement of the transmission shaft, the transmission is stable and reliable. For most optimized transmission, face-tooth coupling transmission shaft is used with large transmission torque.

**Brakes system**

- Air servo brakes are used for all wheels with dual-circuit brake system applied, engine is equipped with an exhaust brake.
- Brakes system includes traveling brake, parking brake, emergency brake and auxiliary brake.
- Traveling brake: All wheels use the air servo brakes and dual-circuit brake system.
- Parking brake: Force driven by accumulator is applied on the third to fourth axle.
- For emergency brake, accumulator is used not only for cutting-off brake but also for emergency brake.
- Auxiliary brake is exhaust brake with brake safety ensured while travelling downhill.

**Suspension system**

- All axles adopt the plate spring suspension systems with plate spring passed 100,000 fatigue tests and with optimization of performance parameters of the front and rear plate springs applied to ensure strength and also to provide comfort riding.

**Steering system**

- Hydraulic power mechanical steering system is applied for axle 1 & 2 , with 4 steering cylinders which could reduce the steering resistance greatly.

**Outriggers**

- Four-point supporting of the H-shaped outriggers ensures easy operation and strong stability with Max. span up to 6.18m×7.6m. They are made of fine-grain high-strength steel sheet with horizontal single-cylinder rope line telescoping for first and second outriggers and with automatic horizontal adjustment applied for outriggers through a vertical cylinder.

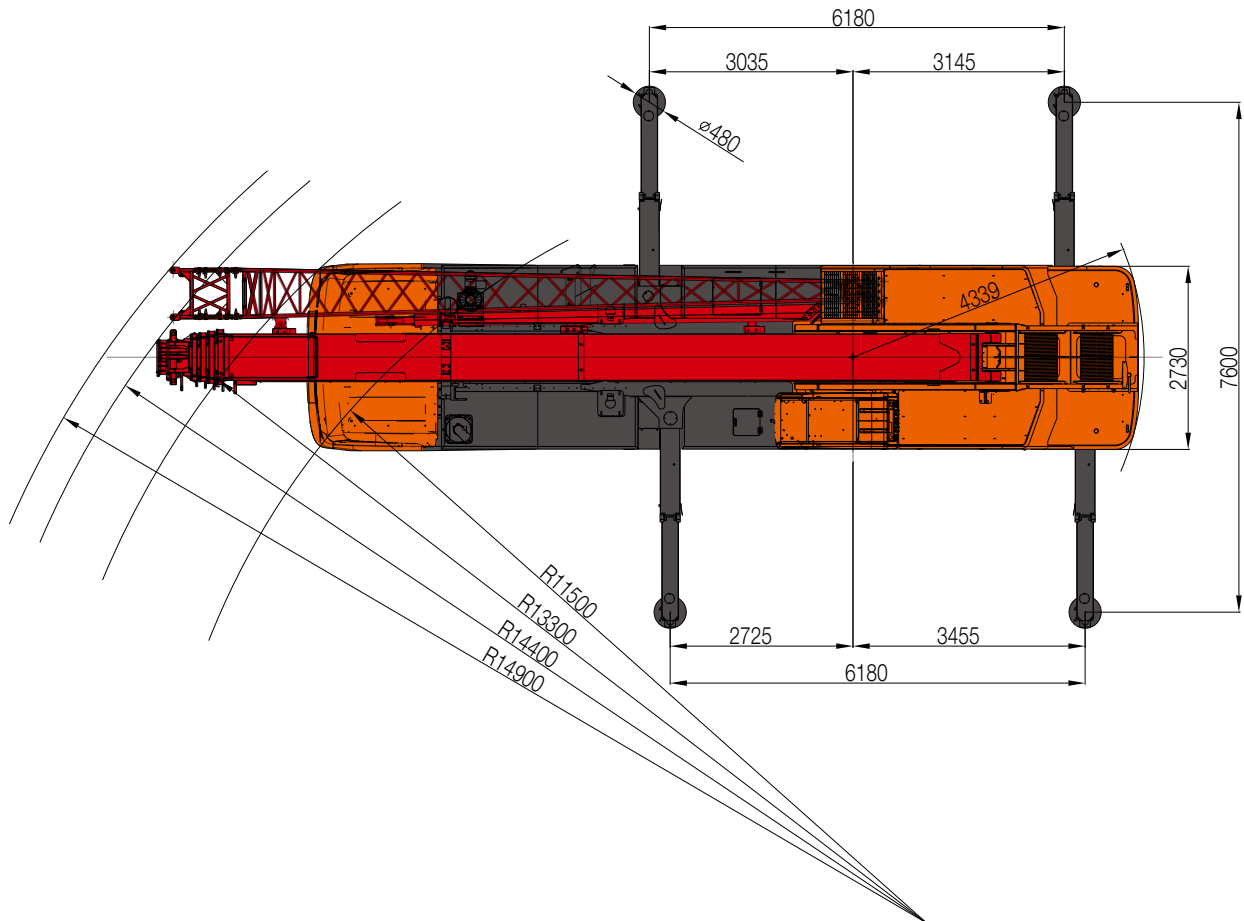
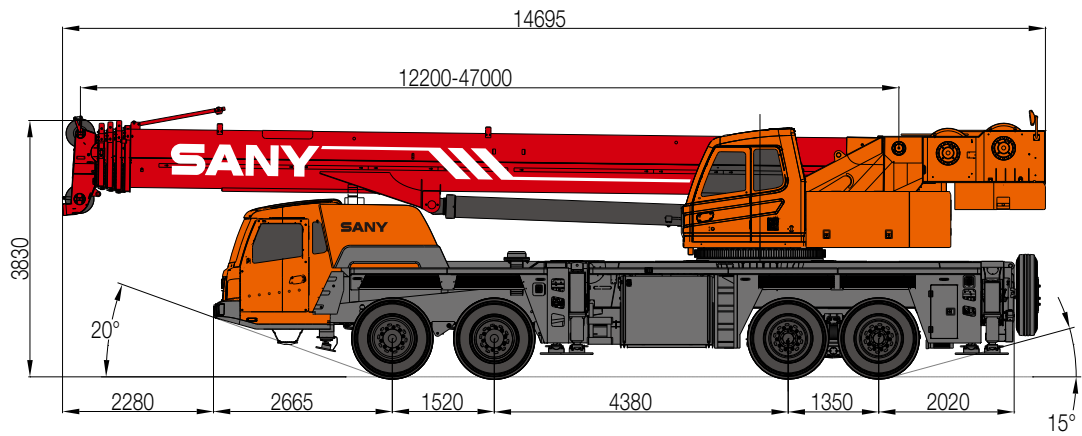
**Tyres**

- 12\*12.00R24-20PR

**Electrical system**

- With 2\*12V maintenance-free batteries, the crane power can be cut off manually via a mechanical master power switch. The use of CAN-bus control system can achieve information interaction between superstructure and undercarriage.



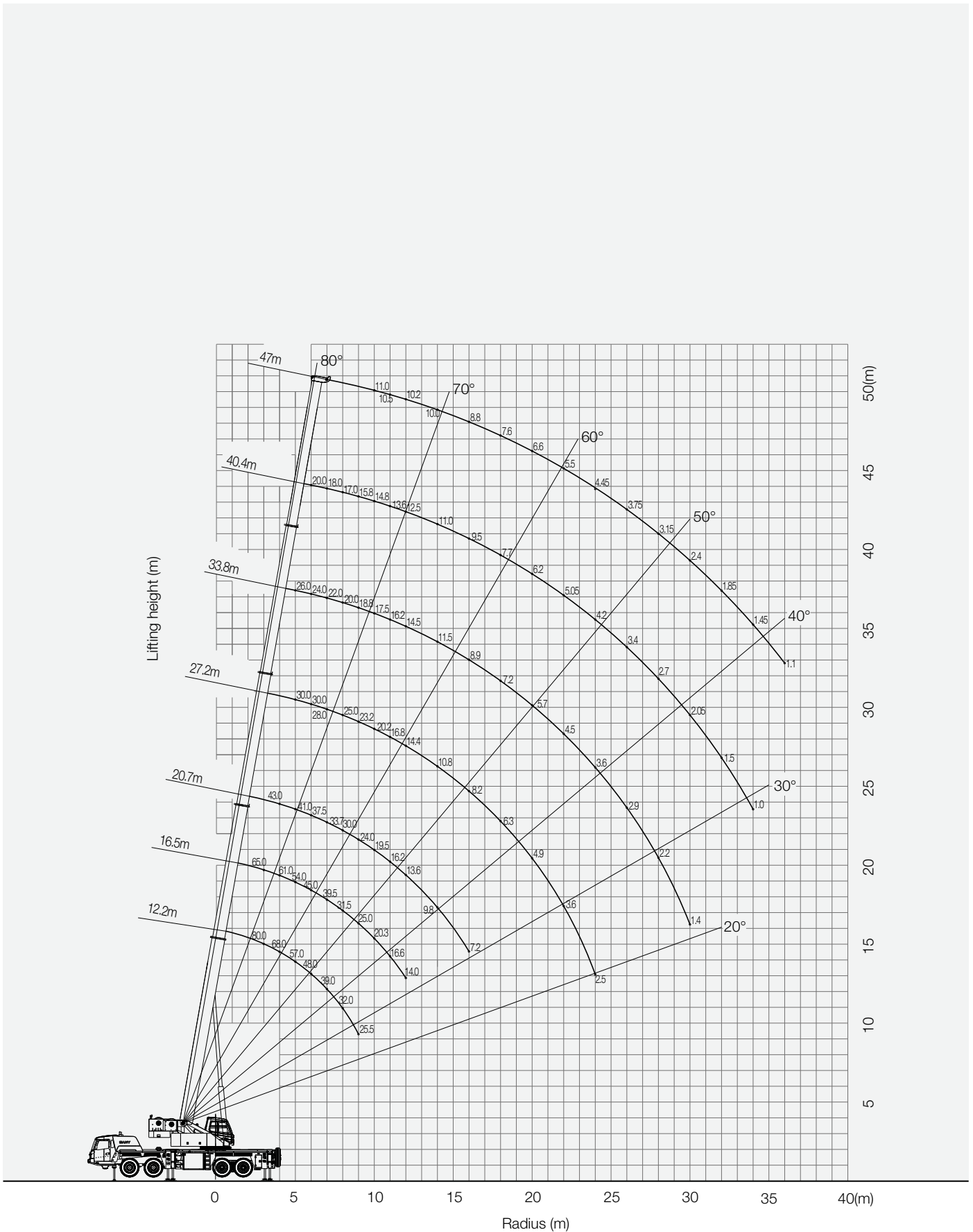


# STC800S TRUCK CRANE

## TECHNICAL PARAMETER

Type	Item		Parameter
Capacity	Max. lifting capacity		80t
Dimensions	Overall length		14695 mm
	Overall width		2750 mm
	Overall height		3830 mm
	Axle distance	Axle-1,2	1520 mm
		Axle-2,3	4380 mm
		Axle-3,4	1350 mm
Weight	Overall weight		46000 kg
	Axle load	Axle load-1,2	20000 kg
		Axle load-3,4	26000 kg
Engine	Rated power		275 kW/ 2100 rpm
	Rated torque		1550 N.m/ (1200~1400) rpm
Traveling	Max.traveling speed		82 km/h
	Turning radius	Min.turning radius	11.5 m
		Min.turning radius of boom head	14.9 m
	Wheel formula		8 × 4
	Min.ground clearance		300 mm
	Approach angle		20 °
	Departure angle		15 °
	Max.gradeability		40%
	Fuel consumption per 100km		≤ 48 L
Main Performance Data	Temperature range		- 20 ° ~ + 45 °
	Min.rated range		3 m
	Tail slewing radius of swingtable		4.339 m
	Boom section		5
	Boom shape		U-shaped
	Max.lifting moment	Base boom	2822kN.m (4+4.5t counterweight) 2958kN.m (4+4.5*2t counterweight)
		Full-extend boom	1380kN.m (4+4.5t counterweight) 1429kN.m (4+4.5*2t counterweight)
		Full-extend boom+jib	724.4 kN·m
	Boom length	Base boom	12.2 m
		Full-extend boom	47.0 m
		Full-extend boom+jib	64.5 m
	Outrigger span (Longitudinal×Transversal)		6.18 × 7.6 m
	Jib offset		0 °, 15 °, 30 °
Working speed	Max.single rope lifting speed of main winch (no load)		130 m/min
	Max.single rope lifting speed of auxiliary winch (no load)		130 m/min
	Full extension/retraction time of boom		100 / 120 s
	Full lifting/descending time of boom		70 / 90 s
	Slewing speed		2.0 r/min
Air condition	Superstructure		Cooling
	Chassis		Cooling and Heating

## STC800S Working radius-lifting height curve (Boom)



# STC800S TRUCK CRANE

## LOAD CHART

Unit:Kg

**Prerequisites:**

- ① Boom operating conditions (fully-extended boom length), min. length is 12.2m and max. length is 47m
- ② The span of outriggers is 6.18×7.6m
- ③ Lifting at the rear side of the crane
- ④ The fixed counterweight is 4t

Working Range (m)	Main Boom															Working Range (m)
	12.2	16.5	18.7	20.7	23	25.2	27.2	29.5	31.8	33.8	36	38.3	40.4	42.5	47	
3	80000	62000														3
3.5	75000	58000														3.5
4	67000	56000	30000	43000												4
4.5	62000	54000	30000	42500	30000	28000										4.5
5	54050	49000	30000	41000	30000	27000	30000	27000		26000						5
5.5	48000	46000	30000	39000	30000	26000	30000	26000		25000						5.5
6	45000	42500	30000	37000	30000	25000	30000	25000	20000	24000	20000		20000			6
6.5	40000	38000	29000	33200	29000	24500	28800	24500	19500	23000	19500		19000			6.5
7	35000	34000	29000	32800	29000	24000	27500	24000	19000	22000	19000		18000			7
7.5	30100	30000	28000	29600	27200	23100	26000	23500	18000	21000	18500		17500			7.5
8	26300	25800	26500	25400	26500	22800	24500	23000	17000	20000	18000		17000			8
9	20600	20300	21000	20000	21000	21500	21200	21800	16000	18600	16800		15500			9
10		16200	17500	15900	17500	18500	17200	17900	15000	17200	15600	11000	14500	11000	11000	10
11		13000	14600	12800	14500	15600	14200	15000	14000	15200	14500	10500	13300	10800	10500	11
12		10700	12600	10400	12200	13400	11900	12800	13200	12600	13600	10000	12500	10500	10200	12
14			9100	7100	8900	10000	8300	9500	10000	9500	10100	9600	10000	10000	9900	14
16				4800	6600	7700	6100	7300	8100	6900	7800	8400	7600	8100	8100	16
18					4900	6000	4300	5600	6400	5250	6200	6700	5800	6600	6300	18
20						5000	3200	4500	5050	3900	4900	5500	4500	5200	5000	20
22							2200	3400	4050	2800	3900	4400	3600	4200	4000	22
24								2600	3300	2100	3100	3600	2700	3400	3200	24
26									2750	1450	2350	2900	2050	2800	2400	26
28											1750	2400	1300	2100	1900	28
30											1350	1900	1000	1700	1300	30
32												1550		1300	750	32
34														750		34
Number of lines	12	10	8	6	5	4	3	2	1	0	0	0	0	0	0	Number of lines
Telescoping condition(%)																
I	0%	50%	0%	100%	50%	0%	100%	50%	0%	100%	50%	0%	100%	50%	100%	I
II	0%	0%	25%	0%	25%	50%	25%	50%	75%	50%	75%	100%	75%	100%	100%	II

Unit:Kg

**Prerequisites:**

- ① Boom operating conditions (fully-extended boom length), min. length is 12.2m and max. length is 47m
- ② The span of outriggers is 6.18×7.6m
- ③ Lifting at the rear side of the crane
- ④ The fixed counterweight is 4t and the flexible counterweight is 4.5t

Working Range (m)	Main Boom															Working Range (m)
	12.2	16.5	18.7	20.7	23	25.2	27.2	29.5	31.8	33.8	36	38.3	40.4	42.5	47	
3	80000	65000														3
3.5	75000	63000														3.5
4	68000	61000	30000	43000												4
4.5	64000	60000	30000	43000	30000	28000										4.5
5	57000	54000	30000	41000	30000	27000	30000	27000		26000						5
5.5	52000	50000	29500	40000	30000	26000	30000	26000		25000						5.5
6	48000	45000	29500	37500	30000	25000	30000	25000	20000	24000	20000		20000			6
6.5	44000	42500	29000	35500	29000	24500	29000	24500	19500	23000	19500		19000			6.5
7	39000	39500	28500	33700	29000	24000	28000	24000	19000	22000	19000		18000			7
7.5	36000	35500	28000	31500	28500	23100	26500	23500	18000	21000	18500		17500			7.5
8	32000	31500	27800	30000	28000	22800	25000	23000	17000	20000	18000		17000			8
9	25500	25000	25000	24000	25000	21500	23200	22000	16000	18800	16800		15800			9
10		20300	20000	19500	20400	20200	20200	20800	15000	17500	15600	11000	14800	11000	11000	10
11		16600	17200	16200	17100	18100	16800	17500	14000	16200	14500	10500	13600	10800	10500	11
12		14000	14600	13600	14500	15500	14400	15000	13200	14500	13600	10000	12500	10500	10200	12
14			11100	9800	10800	11800	10800	11300	11600	11500	12000	9600	11000	10000	10000	14
16				7200	8200	9300	8200	8800	9600	8900	9400	8700	9500	9500	8800	16
18					6300	7400	6300	7100	7700	7200	7500	7900	7700	7900	7600	18
20						6300	4900	5600	6300	5700	6200	6600	6200	6500	6600	20
22							3600	4500	5200	4500	5100	5500	5050	5500	5500	22
24							2500	3600	4300	3600	4200	4600	4200	4500	4450	24
26									3600	2900	3400	3900	3400	3800	3750	26
28										2200	2650	3200	2700	3200	3150	28
30										1400	2100	2700	2050	2600	2400	30
32												2400	1500	2200	1850	32
34													1000	1600	1450	34
36															1100	36
Number of lines	12	10	8	6	5	4	3									Number of lines
Telescoping condition(%)																
I	0%	50%	0%	100%	50%	0%	100%	50%	0%	100%	50%	0%	100%	50%	100%	I
II	0%	0%	25%	0%	25%	50%	25%	50%	75%	50%	75%	100%	75%	100%	100%	II



# STC800S TRUCK CRANE

## LOAD CHART

Unit:Kg

**Prerequisites:**

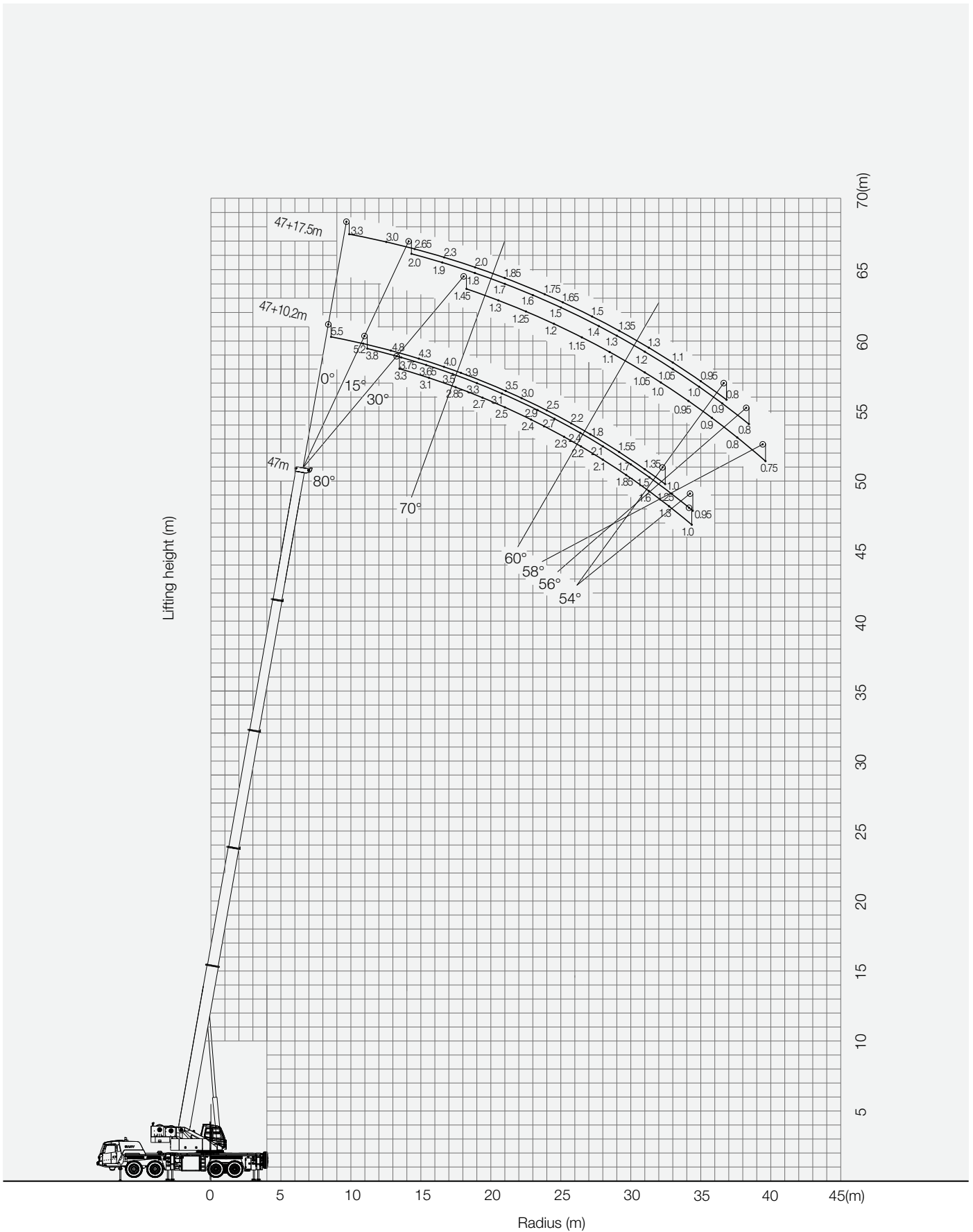
- ① Boom operating conditions (fully-extended boom length), min. length is 12.2m and max. length is 47m
- ② The span of outriggers is 6.18×7.6m
- ③ Lifting at the rear side of the crane
- ④ The fixed counterweight is 4t and the flexible counterweight is 4.5t\*2

Working Range (m)	Main Boom															Working Range (m)
	12.2	16.5	18.7	20.7	23	25.2	27.2	29.5	31.8	33.8	36	38.3	40.4	42.5	47	
3	80000	65000														3
3.5	75000	63000														3.5
4	68000	61000	30000	43000												4
4.5	65000	60000	30000	42500	30000	28000										4.5
5	58000	54000	30000	42000	30000	27000	30000	27000		26000						5
5.5	54000	50000	30000	40000	30000	26000	30000	26000		25000						5.5
6	50300	46000	29000	38000	29000	25000	30000	25000	20000	24000	20000		20000			6
6.5	46000	43000	29000	35800	29000	24500	29000	24500	19500	23000	19500		19000			6.5
7	41500	40000	29000	33700	29000	24000	28000	24000	19000	22000	19000		18000			7
7.5	37200	37000	28000	32000	28500	23100	26500	23500	18000	21000	18500		17500			7.5
8	35100	34500	28000	30300	28000	22800	25000	23000	17000	20000	18000		17000			8
9	28300	27000	27000	27300	27000	21500	23200	22000	16000	18800	16800		15800			9
10		22200	23000	22100	23300	20200	21700	21000	15000	17500	15600	11000	14800	11000	11000	10
11		18500	19900	18500	19500	19500	19400	19900	14000	16200	14500	10500	13600	10800	10500	11
12		15800	17200	16100	16800	17800	16600	17100	13200	15000	13600	10200	12600	10500	10200	12
14			12800	11300	12800	13600	12500	13100	11600	13200	12000	9600	11400	10200	10000	14
16				8500	9800	10800	9600	10400	10500	10700	10900	8800	10000	9800	9000	16
18					7800	8800	7600	8300	9000	8300	8900	8000	8900	8900	8100	18
20						7400	6000	6900	7500	6800	7300	7300	7300	7500	7250	20
22							4800	5600	6200	5500	6100	6400	6100	6400	6400	22
24							3600	4600	5100	4500	5100	5600	5000	5400	5350	24
26									4400	3650	4300	4700	4050	4600	4500	26
28										2950	3600	4000	3350	3900	3700	28
30											3000	3500	2700	3300	3100	30
32												3000	2200	2850	2500	32
34													1750	2300	2050	34
36															1650	36
Number of lines	12	10	8	6	5	4	3	Number of lines								
Telescoping condition(%)																
I	0%	50%	0%	100%	50%	0%	100%	50%	0%	100%	50%	0%	100%	50%	100%	I
II	0%	0%	25%	0%	25%	50%	25%	50%	75%	50%	75%	100%	75%	100%	100%	II

**Notes:**

1. Values listed in the table refer to rated lifting capacity measured at flat and solid ground under the lever state of the crane;
2. Value above heavy line shall be determined by strength of the crane and under this line shall be determined by stability of the crane;
3. Working radius listed in the load chart is the actual radius with load;
4. Rated load values determined by stability shall comply with ISO 4305;
5. Rated lifting capacity listed in the table included weights of lifting hooks (700kg or 800kg of main hook 1, 320kg of main hook 2 and 140kg of auxiliary hook) and hangers;
6. With the 5th outrigger extended, the value listed in the table shall be applicable for 360°operation;
7. Rated lifting capacity with pulley at boom tip shall not exceed 5000kg. If jib is applied, the rated lifting capacity of the boom shall be deducted by 2300kg.
8. If actual boom length and range are between two values specified in the table, larger value will determine the lifting capacity.

## STC800S Working radius-lifting height curve (Jib)



Unit:Kg

**Full-extend outriggers, over side and rear,with max. span up to 6.18m×7.6m,counterweight of 4t,360°rotation**

Main boom angle(°)	47+17.5m jib		
	0°	15°	30°
80°	3300	2000	1450
78°	3000	1900	1300
76°	2650	1800	1250
74°	2300	1700	1200
72°	2000	1600	1150
70°	1850	1500	1100
68°	1750	1400	1050
66°	1650	1300	1000
64°	1500	1200	900
62°	1350	1050	850
60°	1250	950	750
58°	1000	800	700
Min.elevation angle	58°		

Unit:Kg

**Full-extend outriggers, over side and rear,with max. span up to 6.18m×7.6m,counterweight of 4t,360°rotation**

Main boom angle(°)	47+10.2m jib		
	0°	15°	30°
80°	5500	3800	3300
78°	5200	3750	3100
76°	4800	3650	2850
74°	4300	3500	2700
72°	4000	3300	2500
70°	3900	3100	2400
68°	3500	2900	2300
66°	3000	2600	2200
64°	2500	2300	2100
62°	2000	1850	1700
60°	1600	1500	1400
58°	1300	1200	1100
56°	900		
Min.elevation angle	56°		

Unit:Kg

Full-extend outriggers, over side and rear,with max. span up to 6.18m×7.6m,counterweight of 4t+4.5t,360°rotation

Main boom angle(°)	47+17.5m jib		
	0°	15°	30°
80°	3300	2000	1450
78°	3000	1900	1300
76°	2650	1800	1250
74°	2300	1700	1200
72°	2000	1600	1150
70°	1850	1500	1100
68°	1750	1400	1050
66°	1650	1300	1000
64°	1500	1200	950
62°	1350	1050	900
60°	1300	1000	800
58°	1100	900	750
56°	950	800	
54°	800		
Min.elevation angle	54°		

Unit:Kg

Full-extend outriggers, over side and rear,with max. span up to 6.18m×7.6m,counterweight of 4t+4.5t,360°rotation

Main boom angle(°)	47+10.2m jib		
	0°	15°	30°
80°	5500	3800	3300
78°	5200	3750	3100
76°	4800	3650	2850
74°	4300	3500	2700
72°	4000	3300	2500
70°	3900	3100	2400
68°	3500	2900	2300
66°	3000	2700	2200
64°	2500	2400	2100
62°	2200	2100	1850
60°	1800	1700	1600
58°	1550	1500	1300
56°	1350	1250	1000
54°	1000	950	
Min.elevation angle	54°		

Unit:Kg

**Full-extend outriggers, over side and rear,with max. span up to 6.18m×7.6m,counterweight of 4t+4.5t+4.5t,360°rotation**

Main boom angle(°)	47+17.5m jib		
	0°	15°	30°
80°	3300	2000	1450
78°	3000	1900	1350
76°	2650	1800	1300
74°	2300	1700	1250
72°	2000	1600	1200
70°	1850	1500	1150
68°	1750	1400	1100
66°	1650	1300	1050
64°	1500	1200	1000
62°	1450	1100	950
60°	1350	1050	900
58°	1200	950	850
56°	1050	900	800
54°	900		
Min.elevation angle	54°		

Unit:Kg

**Full-extend outriggers, over side and rear,with max. span up to 6.18m×7.6m,counterweight of 4t+4.5t+4.5t,360°rotation**

Main boom angle(°)	47+10.2m jib		
	0°	15°	30°
80°	5500	3800	3300
78°	5200	3750	3100
76°	4800	3650	2850
74°	4300	3500	2700
72°	4000	3300	2500
70°	3900	3100	2400
68°	3500	2900	2300
66°	3000	2700	2200
64°	2650	2500	2100
62°	2300	2250	2000
60°	2000	1900	1800
58°	1800	1700	1400
56°	1550	1350	1150
54°	1200	1050	950
52°	900		
Min.elevation angle	52°		



■ TRUCK CRANE



STC200  
Maximum Load Capacity: 20t  
Telescopic Boom: 4 Sections, 10.6-33m



STC250  
Maximum Load Capacity: 25t  
Telescopic Boom: 4 Sections, 10.65-33.5m



STC250H  
Maximum Load Capacity: 25t  
Telescopic Boom: 5 Sections, 10.5-39.5m



STC300S  
Maximum Load Capacity: 30t  
Telescopic Boom: 5 Sections, 10.6-40.5m



STC300TH  
Maximum Load Capacity: 30t  
Telescopic Boom: 4 Sections, 10.6-33.5m



STC300H  
Maximum Load Capacity: 30t  
Telescopic Boom: 5 Sections, 10.5-39.5m



STC500  
Maximum Load Capacity: 50t  
Telescopic Boom: 5 Sections, 11.5-43m



STC550  
Maximum Load Capacity: 55t  
Telescopic Boom: 5 Sections, 11.5-43m



STC600S  
Maximum Load Capacity: 60t  
Telescopic Boom: 5 Sections, 11.3-43.5m



STC750  
Maximum Load Capacity: 75t  
Telescopic Boom: 5 Sections, 11.8-45m



STC800S  
Maximum Load Capacity: 80t  
Telescopic Boom: 5 Sections, 12.2-47m



STC1000  
Maximum Load Capacity: 100t  
Telescopic Boom: 5 Sections, 13.5-52m



STC1000C  
Maximum Load Capacity: 100t  
Telescopic Boom: 6 Sections, 13.25-60m



STC1000S  
Maximum Load Capacity: 100t  
Telescopic Boom: 5 Sections, 12.25-56m



STC1200S  
Maximum Load Capacity: 120t  
Telescopic Boom: 7 Sections, 12.6-63.5m



STC1300C  
Maximum Load Capacity: 130t  
Telescopic Boom: 6 Sections, 13.3-60m



STC1600  
Maximum Load Capacity: 160t  
Telescopic Boom: 6 Sections, 13.4-62m



STC2200  
Maximum Load Capacity: 220t  
Telescopic Boom: 6 Sections, 14.25-68m

■ ALL TERRAIN CRANE



SAC1800  
Maximum Load Capacity: 180t  
Telescopic Boom: 6 Sections, 15.5-62m



SAC2200  
Maximum Load Capacity: 220t  
Telescopic Boom: 6 Sections, 13.5-62m



SAC2600  
Maximum Load Capacity: 260t  
Telescopic Boom: 6 Sections, 15.65-73m



SAC3000  
Maximum Load Capacity: 300t  
Telescopic Boom: 7 Sections, 15.4-83m



SAC3500  
Maximum Load Capacity: 350t  
Telescopic Boom: 6 Sections, 15.2-70m



SAC6000  
Maximum Load Capacity: 600t  
Telescopic Boom: 7 Sections, 17.1-90m

■ ROUGH-TERRAIN CRANE



SRC250  
Maximum Load Capacity: 25t  
Telescopic Boom: 4 Sections, 9.9-31.5m



SRC350  
Maximum Load Capacity: 35t  
Telescopic Boom: 4 Sections, 10-31.5m



SRC550  
Maximum Load Capacity: 55t  
Telescopic Boom: 4 Sections, 11.25-34.5m



SRC600H  
Maximum Load Capacity: 55t  
Telescopic Boom: 5 Sections, 11.5-43m



SRC750  
Maximum Load Capacity: 75t  
Telescopic Boom: 5 Sections, 11.8-45m



SRC1200  
Maximum Load Capacity: 120t  
Telescopic Boom: 5 Sections, 13-49m



Quality Changes the World

## SANY AUTOMOBILE HOISTING MACHINERY

Address: SANY Industrial Park, Jinzhou Development Zone,  
Changsha, Hunan, China.  
Service Hotline: 4006098318  
Email: [crd@sany.com.cn](mailto:crd@sany.com.cn)  
For more information, please visit: [www.sanygroup.com](http://www.sanygroup.com)

For our consistent improvement in technology, specifications may change without notice.  
The machines illustrated may show optional equipment which can be supplied at additional cost.

Version: 2016.1

**Distributed By:**